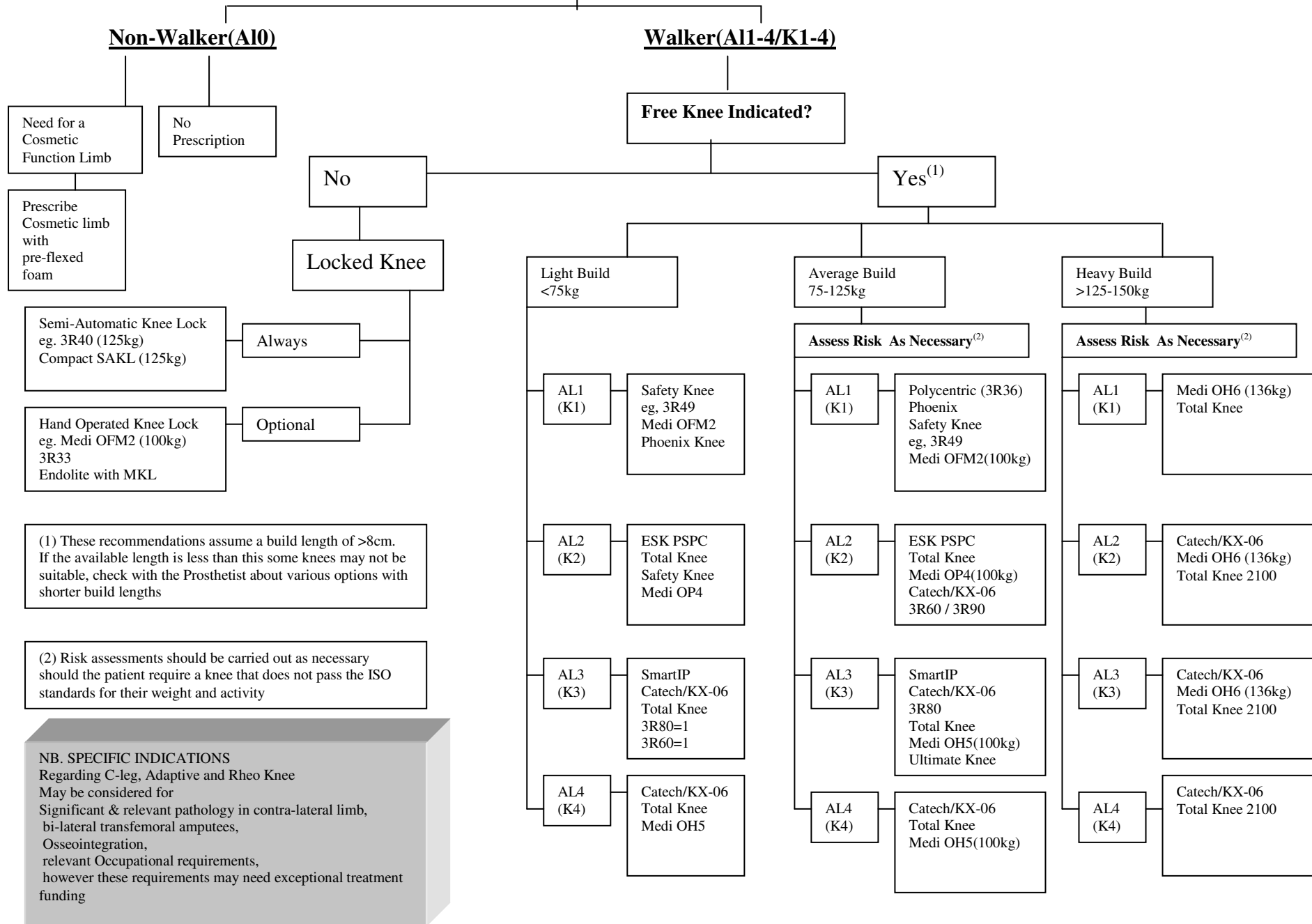


Assessment for Prosthetic Knee Prescription

© IRPAG-July2009



(1) These recommendations assume a build length of >8cm. If the available length is less than this some knees may not be suitable, check with the Prosthetist about various options with shorter build lengths

(2) Risk assessments should be carried out as necessary should the patient require a knee that does not pass the ISO standards for their weight and activity

NB. SPECIFIC INDICATIONS
Regarding C-leg, Adaptive and Rheo Knee
May be considered for
Significant & relevant pathology in contra-lateral limb,
bi-lateral transfemoral amputees,
Osseointegration,
relevant Occupational requirements,
however these requirements may need exceptional treatment funding